

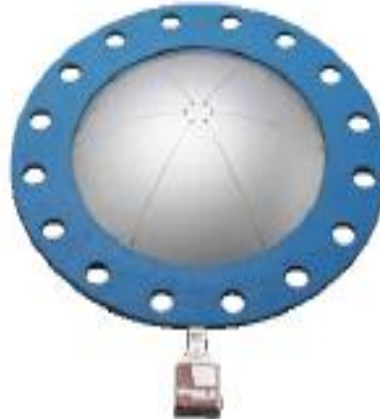


Forward Acting Composite Rupture Disc/LF Series

The concave of forward acting rupture disc is on the high pressure process side. LF rupture disc consists of three parts: slotted burst cap, sealing film and back pressure support.

— Technical features

- Forward acting composite rupture disc
- State-of-the-art laser slotted metal section
- Operating ratios up to 80% of the low end of burst tolerance
- Fragment resistant design
- Standard Material:SS/FEP/SS. Other seal materials are available
- Suitable for liquid, gas, or two-phase applications
- Sizes from 15mm to 1100mm
- Burst ratings from 0.02barg to 2000 barg
- Attached 3-dimensional stainless steel tag is engraved with complete disc specification



N



Minimum and Maximum Burst Pressure Ratings - psig(barg)@72°F(22°C)

Disk Size		Sealing Membrane Materials															
		FEP				PTFE				Aluminum				Nickel			
		psig		barg		psig		barg		psig		barg		psig		barg	
NPS [in]	DN [mm]	min	max	min	max	min	max	min	max	min	max	min	max	min	max	min	max
1"	25	11.6	1015	0.8	70	29	1015	2	70	87	1595	6	110	348	2175	24	150
1¼"	32	8.7	870	0.6	60	21.75	870	1.5	60	65.25	1450	4.5	100	290	1305	20	90
1½"	40	5.8	725	0.4	50	14.5	725	1	50	52.2	1305	3.6	90	217.5	1160	15	80
2"	50	4.35	580	0.3	40	10.88	580	0.75	40	49.3	957	3.4	66	203	1015	14	70
2½"	65	3.63	522	0.25	36	9.08	522	0.63	36	36.25	841	2.5	58	159.5	870	11	60
3"	80	2.9	464	0.2	32	7.25	464	0.5	32	31.9	725	2.2	50	145	725	10	50
4"	100	2.18	420.5	0.15	29	5.45	420.5	0.38	29	26.1	638	1.8	44	116	580	8	40
5"	125	2.18	377	0.15	26	5.45	377	0.38	26	21.75	580	1.5	40	101.5	580	7	40
6"	150	2.18	333.5	0.15	23	5.45	333.5	0.38	23	18.85	493	1.3	34	87	435	6	30
8"	200	1.45	304.5	0.1	21	3.63	304.5	0.25	21	14.5	435	1	30	72.5	435	5	30
10"	250	1.16	246.5	0.08	17	2.9	246.5	0.2	17	11.6	348	0.8	24	58	435	4	30
12"	300	1.02	203	0.07	14	2.55	203	0.18	14	10.15	290	0.7	20	43.5	362.5	3	25
14"	350	0.87	174	0.06	12	2.18	174	0.15	12	8.7	275.5	0.6	19	43.5	362.5	3	25
16"	400	0.73	145	0.05	10	1.83	145	0.13	10	7.25	261	0.5	18	36.25	290	2.5	20
M ax. Temp.		392°F (200°C)				500°F (260°C)				752°F (400°C)				986°F (530°C)			

Disk Size		Sealing Membrane Materials															
		Monel				Inconel				Stainless Steel				Hastelloy C- 276			
		psig		barg		psig		barg		psig		barg		psig		barg	
NPS [in]	DN [mm]	min	max	min	max	min	max	min	max	min	max	min	max	min	max	min	max
1"	25	406	2175	28	150	478.5	2175	33	150	406	2175	28	150	435	2175	30	150
1¼"	32	319	1305	22	90	377	1305	26	90	319	1305	22	90	333.5	1305	23	90
1½"	40	261	1160	18	80	304.5	1160	21	80	261	1160	18	80	275.5	1160	19	80
2"	50	232	1015	16	70	275.5	1015	19	70	232	1015	16	70	261	1015	18	70
2½"	65	174	870	12	60	203	870	14	60	174	870	12	60	377	870	26	60
3"	80	159.5	725	11	50	174	725	12	50	159.5	725	11	50	333.5	725	23	50
4"	100	130.5	580	9	40	145	580	10	40	130.5	580	9	40	261	580	18	40
5"	125	116	580	8	40	130.5	580	9	40	116	580	8	40	217.5	580	15	40
6"	150	101.5	435	7	30	116	435	8	30	101.5	435	7	30	203	435	14	30
8"	200	87	435	6	30	101.5	435	7	30	87	435	6	30	159.5	435	11	30
10"	250	72.5	435	5	30	87	435	6	30	72.5	435	5	30	130.5	435	9	30
12"	300	58	362.5	4	25	72.5	362.5	5	25	58	362.5	4	25	116	362.5	8	25
14"	350	58	362.5	4	25	72.5	362.5	5	25	58	362.5	4	25	101.5	362.5	7	25
16"	400	43.5	290	3	20	58	290	4	20	43.5	290	3	20	87	290	6	20
M ax. Temp.		986°F (530°C)				986°F (530°C)				986°F (530°C)				986°F (530°C)			

Notes: For higher temperatures, materials, sizes, burst ratings not shown, contact BasCo.



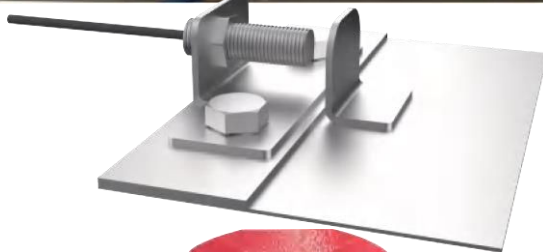
Burst Sensors



Model NBI
Integrated within rupture disc
Ex ibD 21 $U_i \leq 24V$
DC
 $I_i \leq 100mA$



Model BIX
Attached on rupture disc
 $U_i \leq 24V$ DC
 $I_i \leq 100mA$



Model HE
Hall Sensor
Voltage : 6-36V DC



Junction Box
ExtD A21
For connecting burst sensors to monitoring system